

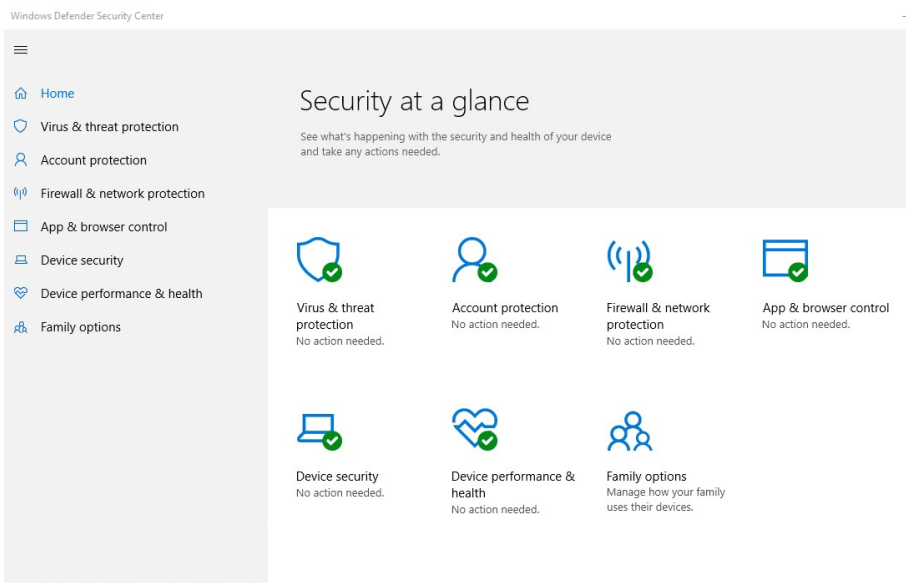
How to exclude The Companion within Windows 'Defender'

If you have Windows 10, you will most likely have the 'Defender', Microsoft's version of anti-virus. You will need to follow the steps below to ensure the Defender and The Companion are compatible.

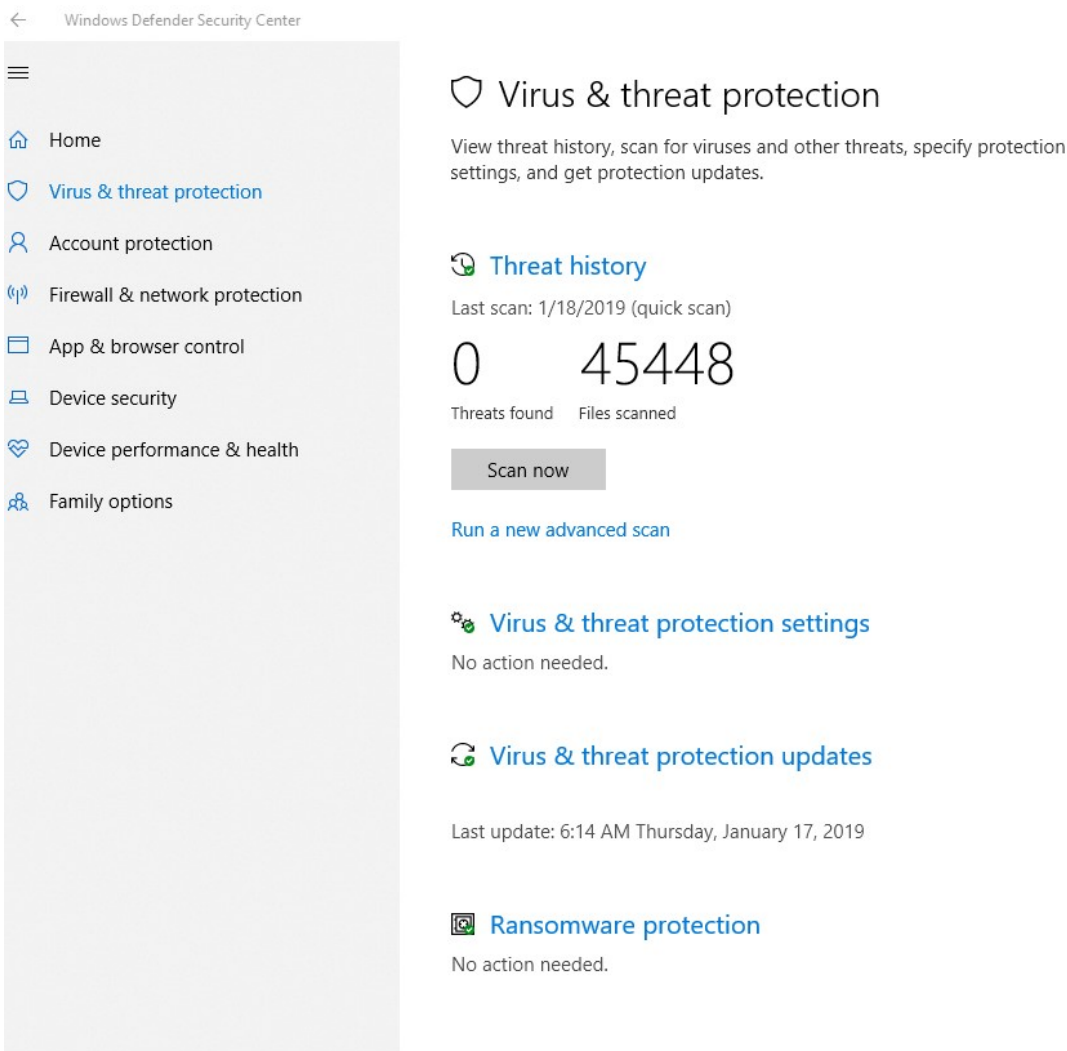
Click on the 'Windows' button in the toolbar



In the 'search' bar, type in "Defender". The 'Windows Defender Security Center' will then be an option, click to open. It should then look like the picture below.



Then, click on 'virus and threat protection', and then click on 'virus and threat protection settings'.



Scroll down to 'Exclusions', then 'add or remove exclusions'

Controlled folder access

Protect files, folders, and memory areas on your device from unauthorized changes by unfriendly applications.

[Manage Controlled folder access](#)

Exclusions

Windows Defender Antivirus won't scan items that you've excluded. Excluded items could contain threats that make your device vulnerable.

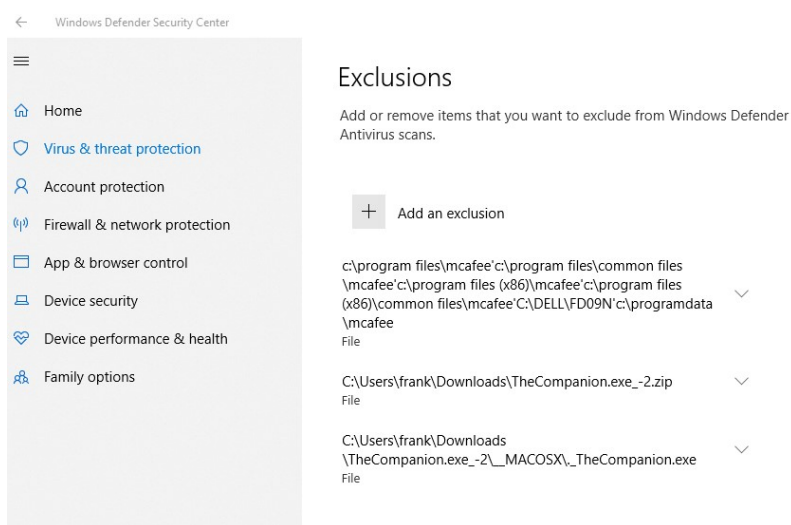
[Add or remove exclusions](#)

Notifications

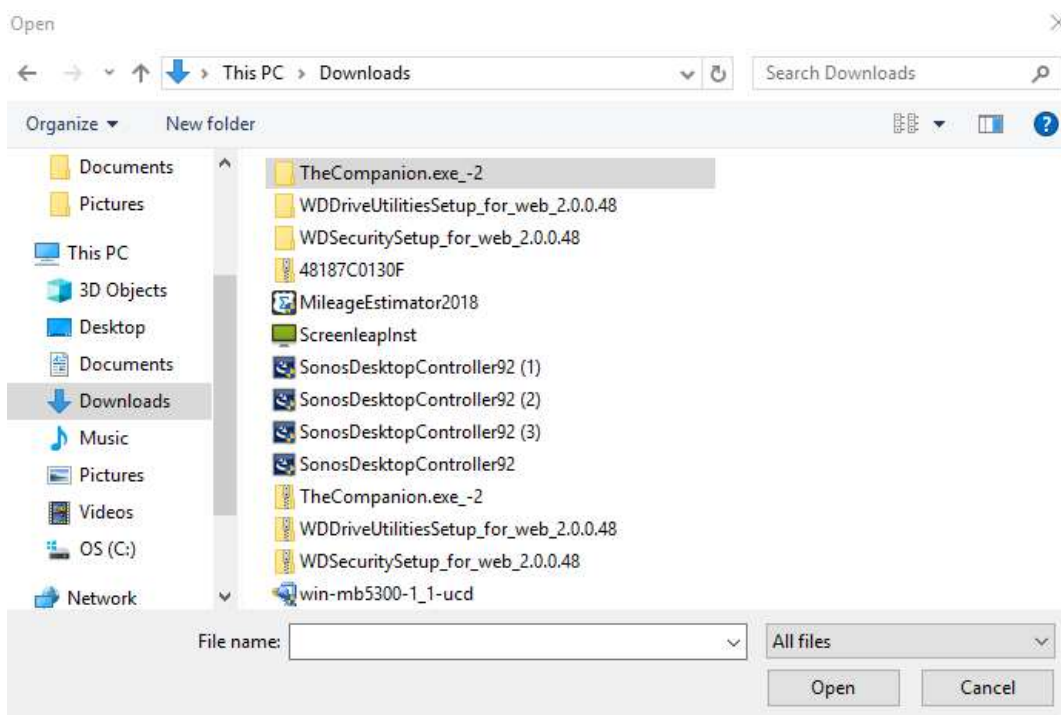
Windows Defender Antivirus will send notifications with critical information about the health and security of your device. You can specify which non-critical notifications you would like.

[Change notification settings](#)

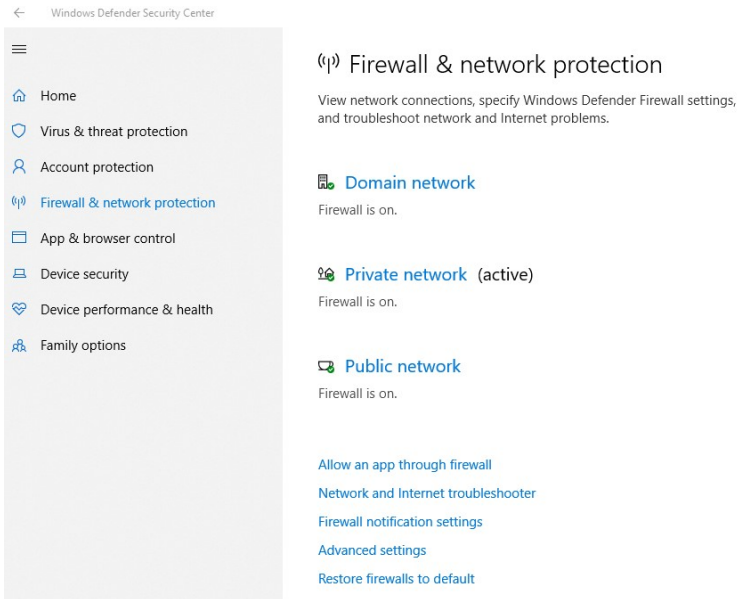
In the 'Exclusions' tab, click '+ add an exclusion'. Then click 'File' in the dropdown.



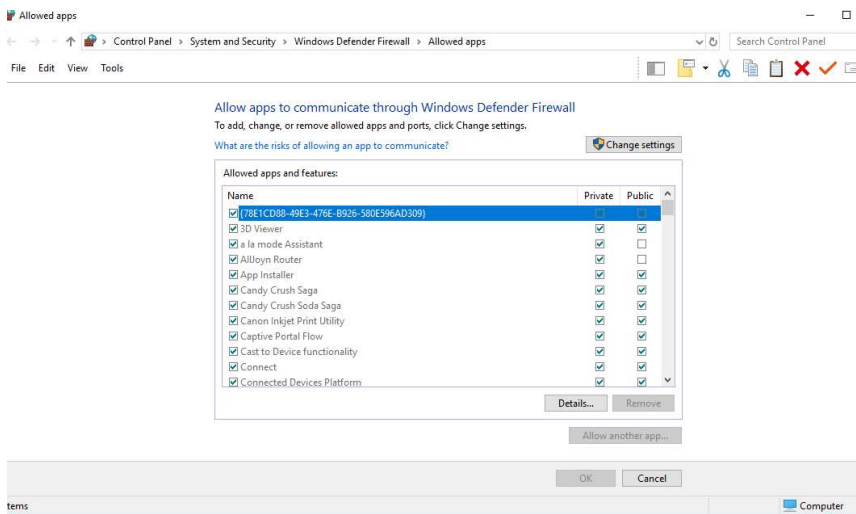
The Companion will then, most likely, be under 'Downloads' on your computer. If not, search your computer until you find all TheCompanion.exe files. In the example below, it is in two folders. Highlight one, then click 'open'. It will then add it to exclusions. Repeat to add any other folders that have 'TheCompanion'.



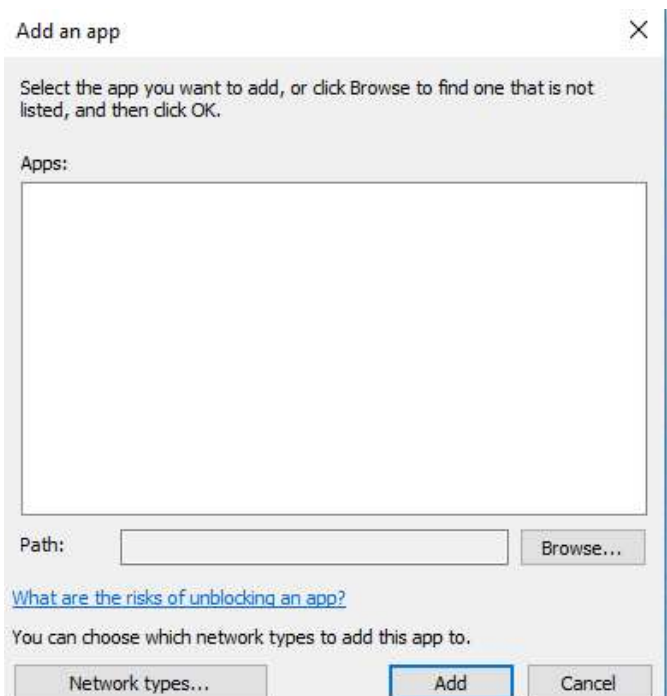
When completed, go back to the Windows Defender Dashboard and click on 'firewall & network protection'. Then go to 'allow an app through firewall'.



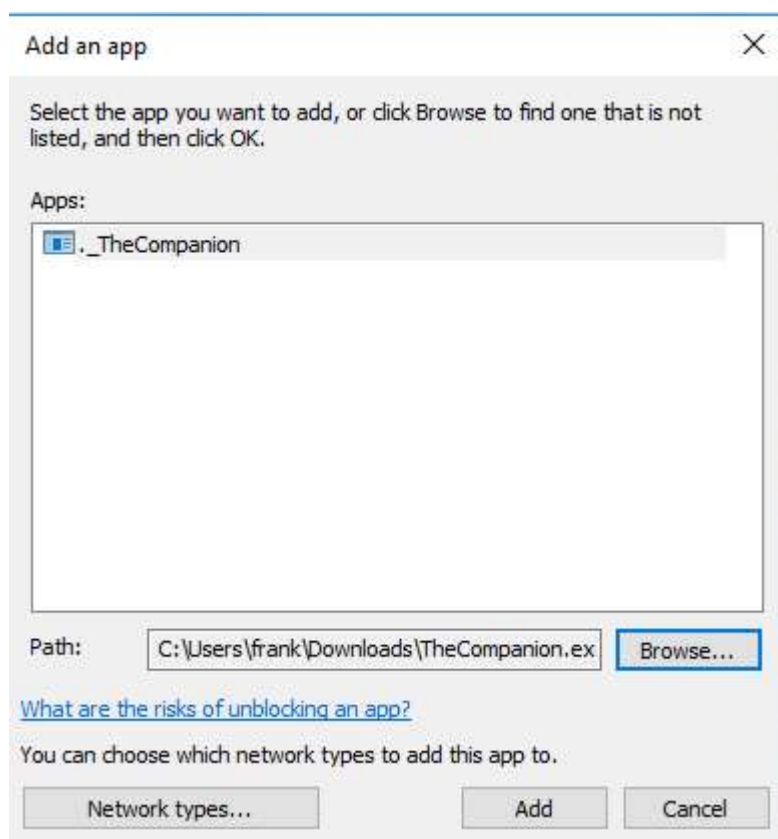
Below is a picture of what you should then be seeing.



Click 'Change Settings', then 'allow another app'. The 'add an app' screen should now be displayed.



Click 'browse', then find 'TheCompanion' on your computer. Click 'Add'.



All done. The 'Defender' should now allow TheCompanion to work as designed.